

TR90+ACETATE



▲ TR-BC905 Size : 51-18-145

Anti-blue light



N0.2 透明色C26-P81



N0.3 亮透紫C458-P81



N0.5 亮透粉C455-P81

TR90+ACETATE



▲ TR-BC906 Size : 50-17-145

Anti-blue light



N0.1 亮黑C01-P81



N0.2 豆花C451-P81



N0.3 透蓝C456-P81



N0.5 透粉C455-P81

TR90+ACETATE



▲ TR-BC907 Size : 51-17-145

Anti-blue light



N0.1 亮黑C01-P81



N0.2 亮果冻绿C447-P81



N0.3 透明C26-P81

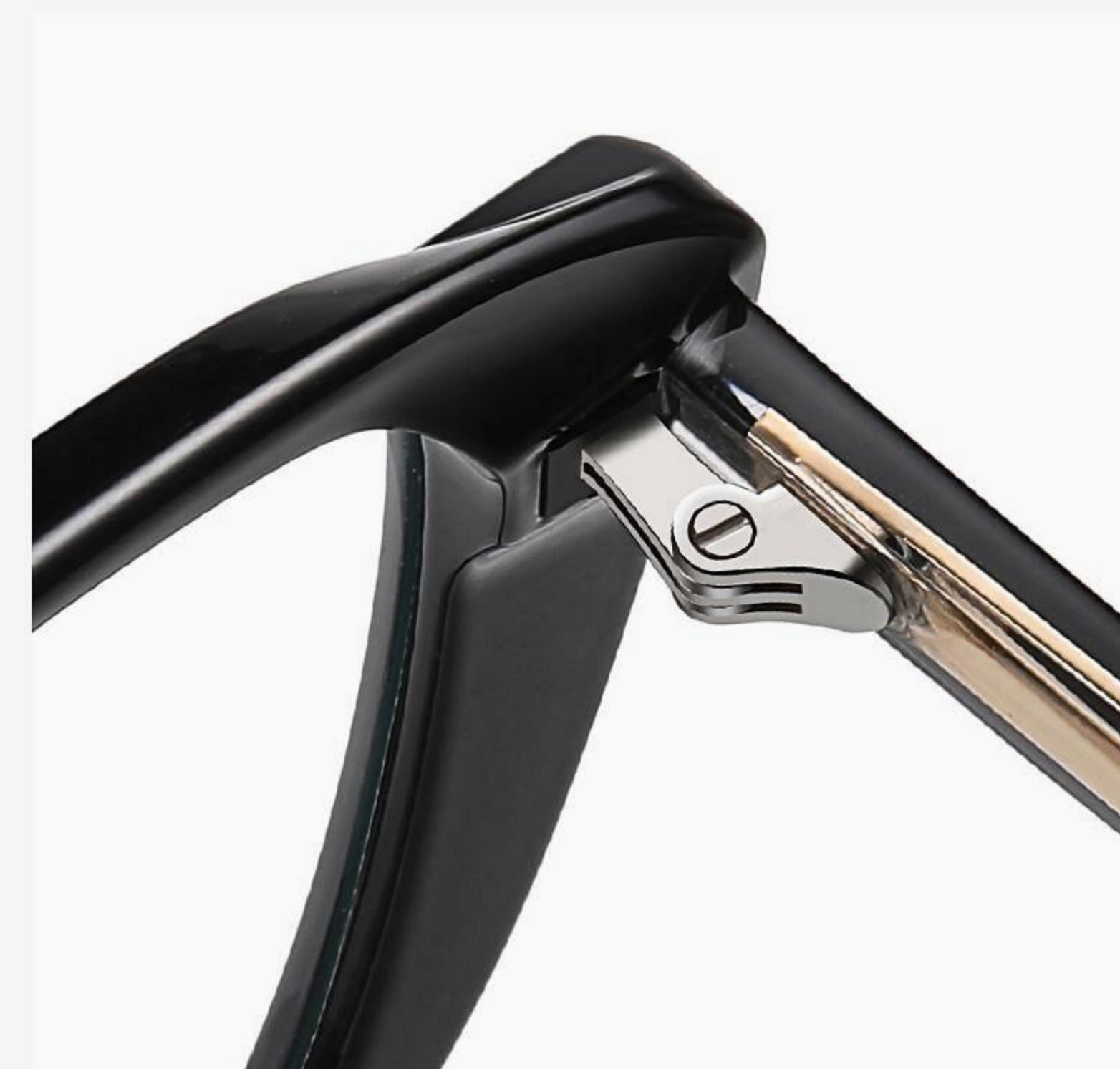


N0.4 亮果冻浅棕C445-P81



N0.5 亮透明深粉C313-P81

TR90+ACETATE



▲ TR-BC908 Size : 54-15-145

Anti-blue light



N0.1 亮黑C01-P81



N0.2 透紫C484-P81



N0.3 豆花C481-P81



N0.4 透灰C25-P81



N0.5 透蓝绿C259-P81

TR90+ACETATE



▲ BC909

Size : 54-17-145

Optical mirrors



N0.1 亮黑C01-P181

TR90+ACETATE



▲ BC910

Size : 54-20-145

Optical mirrors



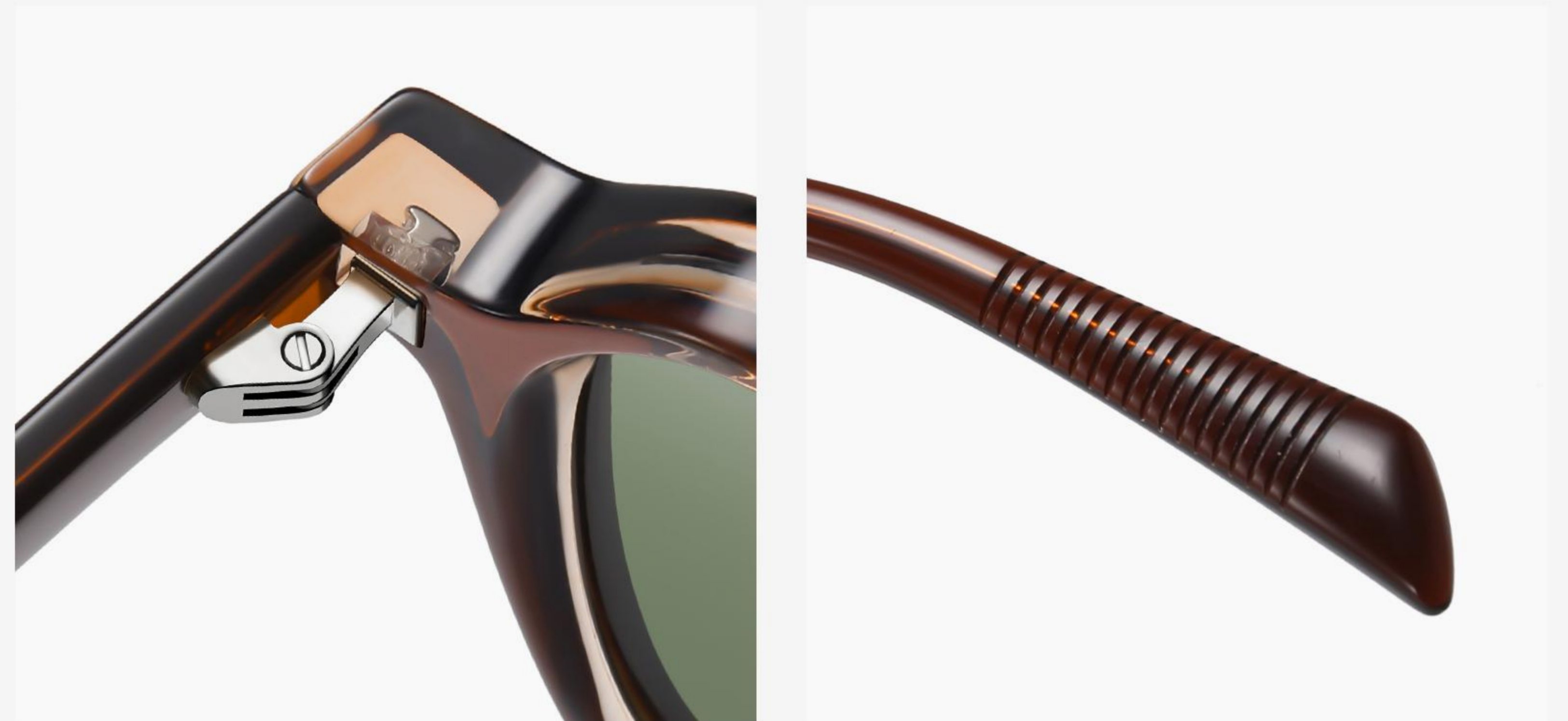
N0.2 亮透茶C483-P181

TR+ACETATE



△ S31103 Size :48-22-147

Anti Blue Lens



N0.5 亮黑C1-1 (防蓝光)



N0.6 豆花C2-1 (防蓝光)



COLOR.7 C3-1



N0.8 上黑下透米C4-1 (防蓝光)

TR+ACETATE



▲ S31106

Size :47-26-148

Anti Blue Lens



N0.5 亮黑C1-1 (防蓝光)



N0.6 亮黑框外黑内豆花脚C2-1 (防蓝光)



N0.7 亮透酒红C3-1 (防蓝光)



N0.8 上蓝豆花下透灰C4-1 (防蓝光)

TR+ACETATE



▲ S31108 Size :47-28-148

Anti Blue Lens



N0.5 亮黑C1-1 (防蓝光)



N0.6 亮玳瑁C2-1 (防蓝光)



COLOR.8 C4-1

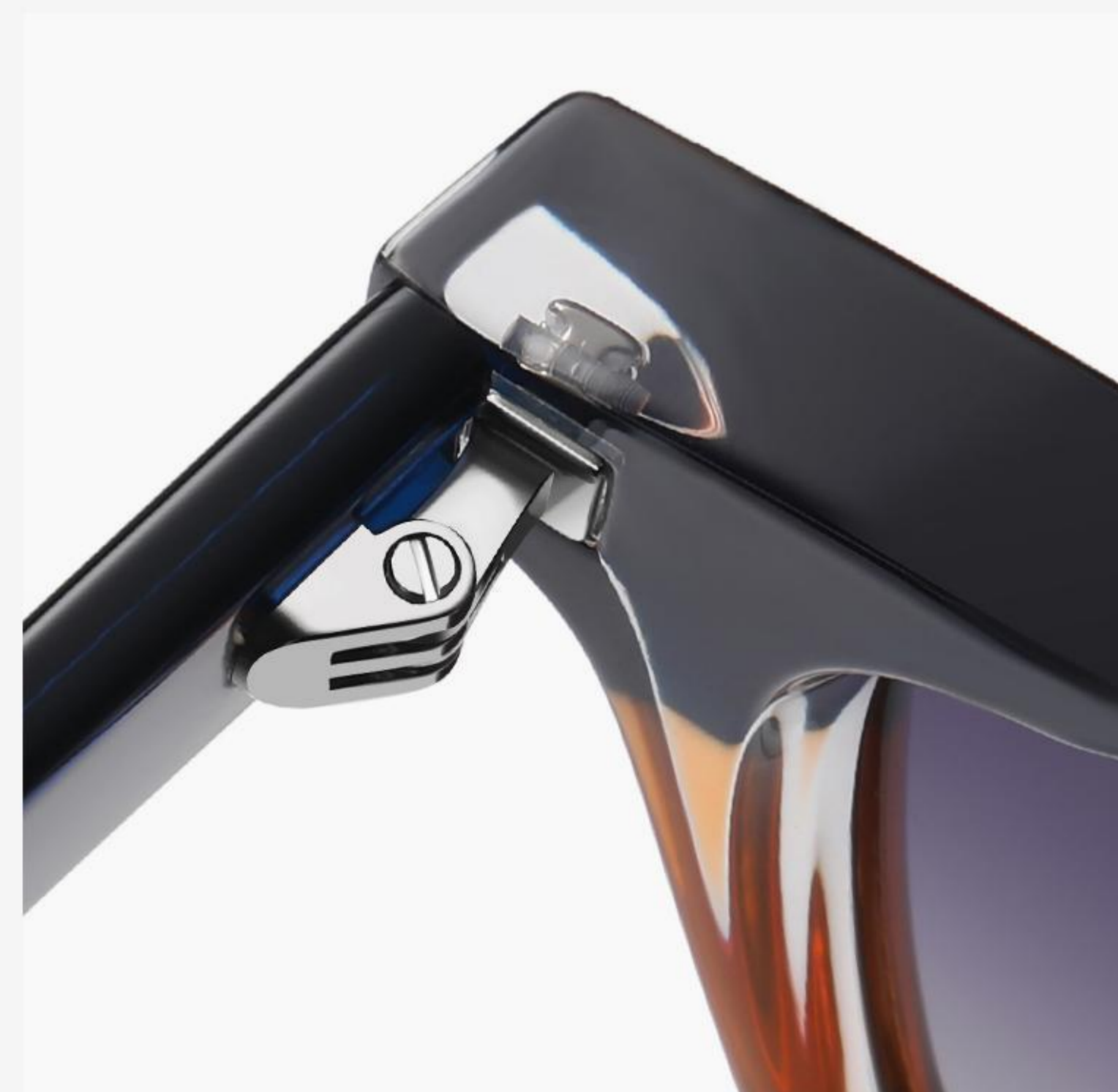
TR+ACETATE



▲ S31110

Size :47-24-148

Anti Blue Lens



N0.6 豆花C2-1 (防蓝光)

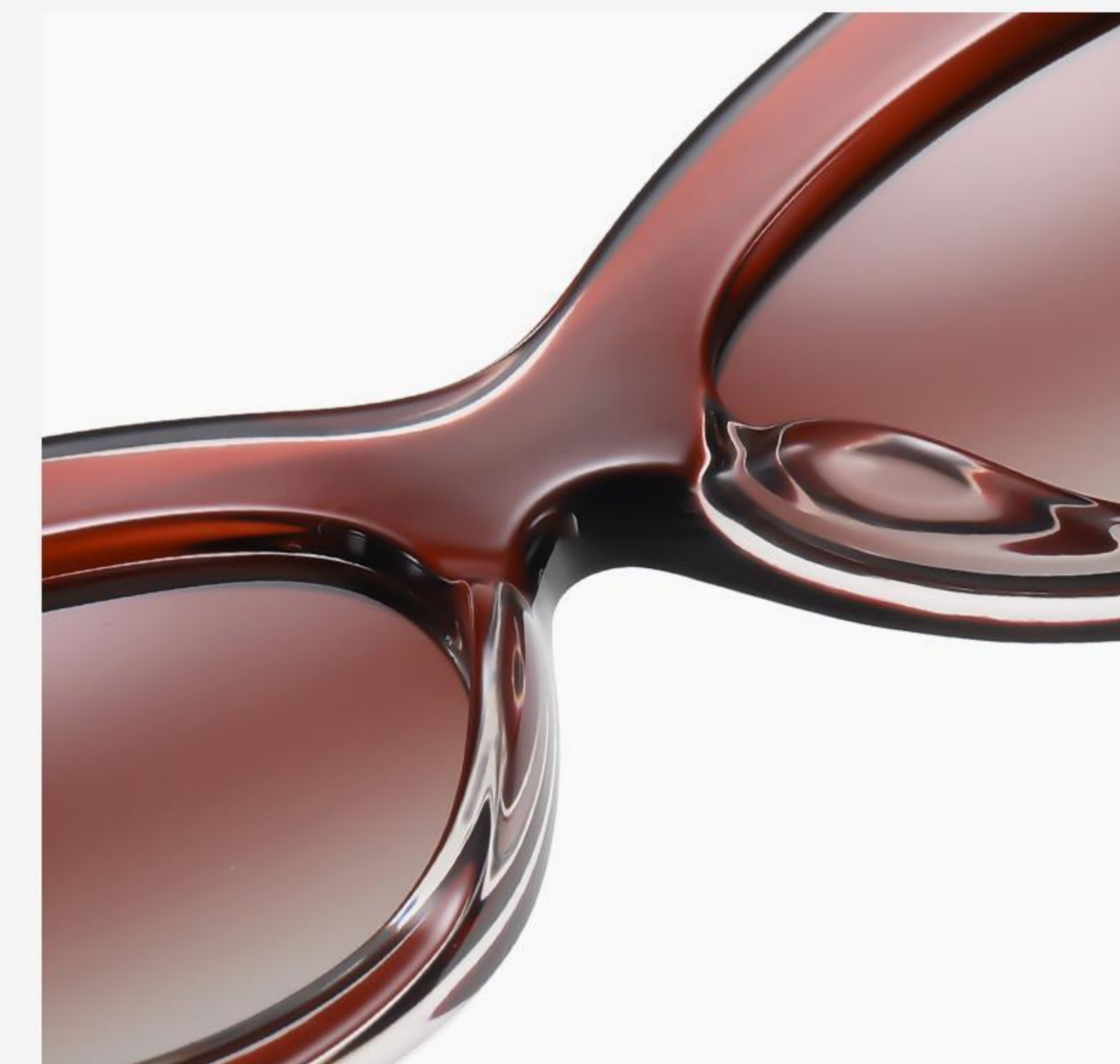
TR+ACETATE



▲ S26102

Size : 54-17-145

Anti blue Lens



NO.10 亮透灰绿桩头豆花C5-1 (防蓝光)

TR+ACETATE



▲ S26104 Size : 47-21-145

Anti blue Lens



N0.7 豆花C2-1 (防蓝光)



N0.8 亮实米白C3-1 (防蓝光)



N0.9 亮透灰绿桩头豆花C4-1 (防蓝光)



N0.10 亮透棕桩头豆花C5-1 (防蓝光)

TR+ACETATE



▲ S26105

Size : 49-20-145

Anti blue Lens



N0.10 亮米白桩头豆花C5-1 (防蓝光)

TR+ACETATE



▲ S26106

Size : 51-18-145

Anti blue Lens



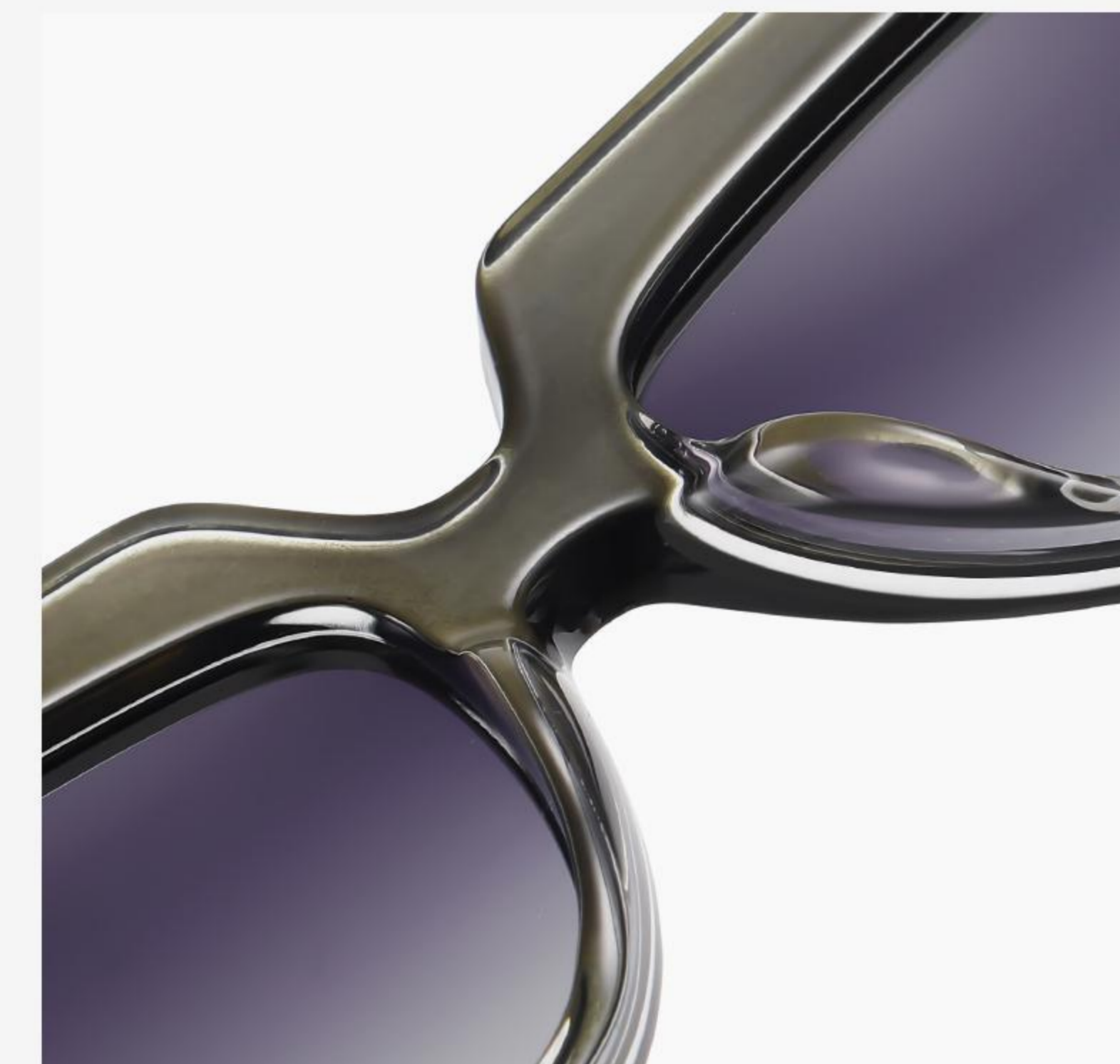
N0.10 亮黑桩头豆花C5-1 (防蓝光)

TR+ACETATE



▲ S26107 Size : 51-17-145

Anti blue Lens



N0.6 亮黑C1-1 (防蓝光)



N0.7 亮透棕桩头豆花C2-1 (防蓝光)



N0.8 亮透灰绿桩头豆花C3-1 (防蓝光)



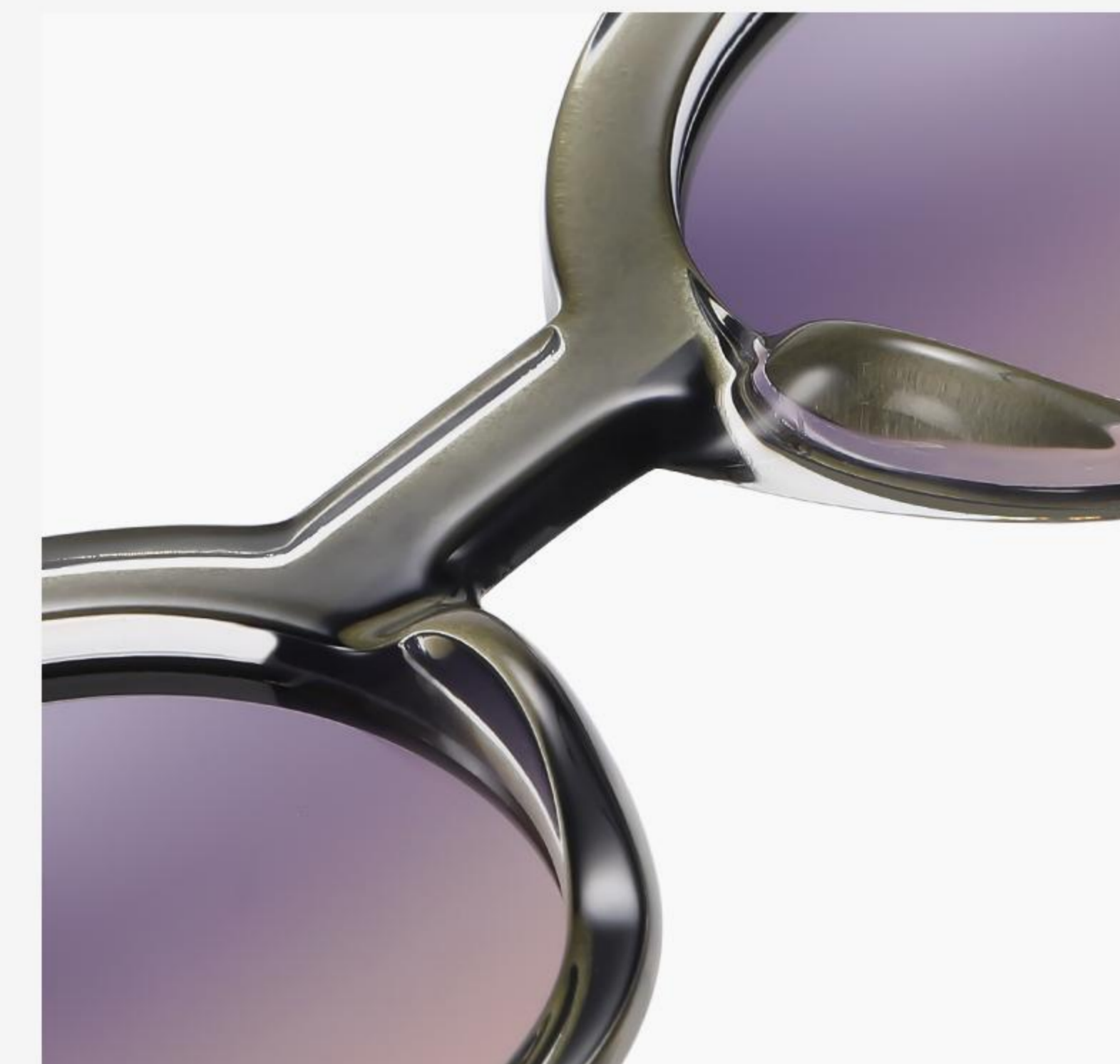
N0.10 亮实米粉C5-1 (防蓝光)

TR+ACETATE



▲ S26109 Size : 45-25-145

Anti Blue Lens



N0.9 亮实米粉C4-1 (防蓝光)

TR+ACETATE



▲ S26110

Size : 51-19-145

Anti Blue Lens



N0.7 豆花C2-1 (防蓝光)



N0.10 亮透灰绿C5-1 (防蓝光)

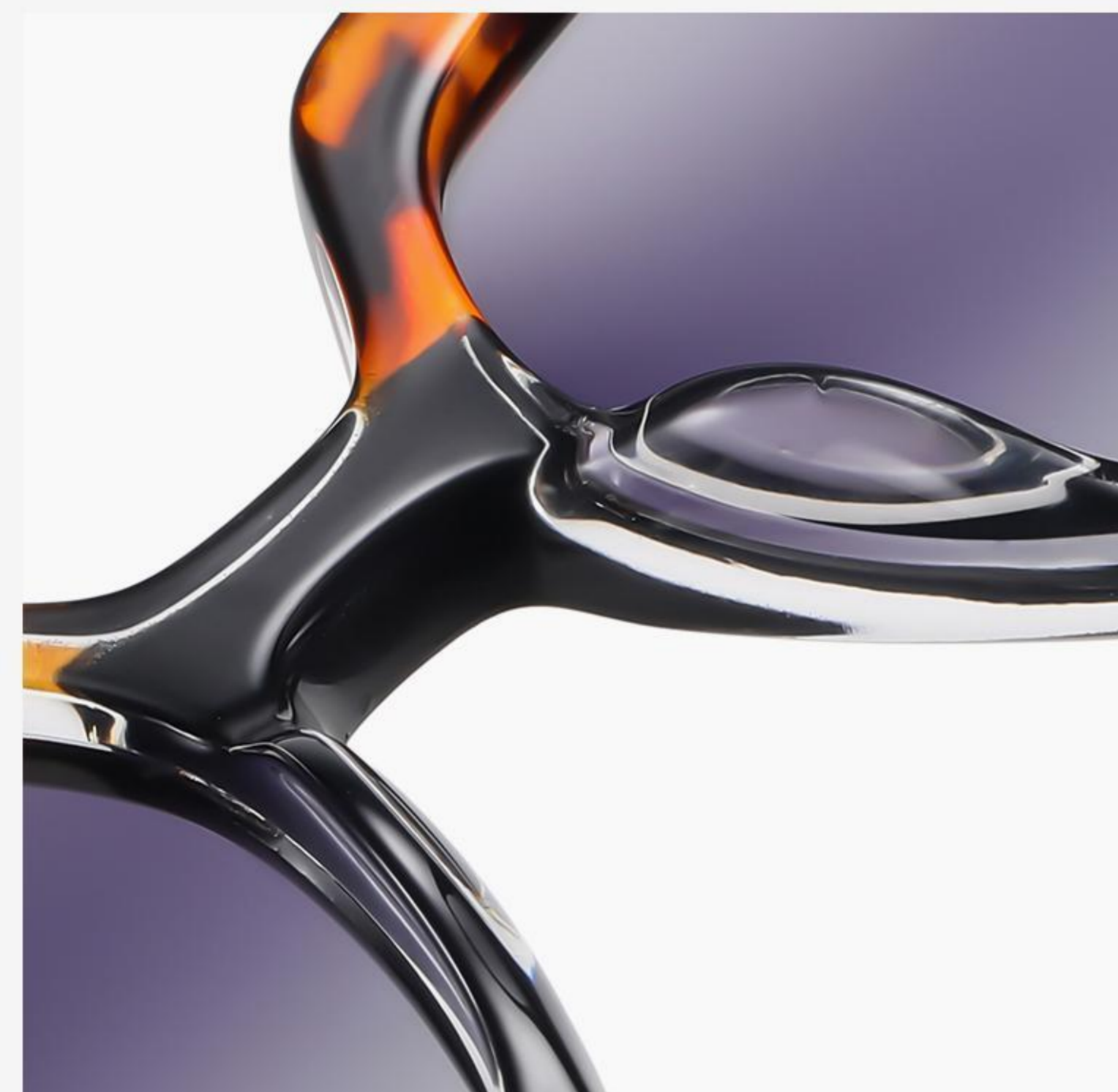
TR+ACETATE



▲ S26112

Size : 50-19-145

Anti Blue Lens



N0.7 上玳瑁下亮黑桩头米白C2-1 (防蓝光)



N0.8 亮实米粉C3-1 (防蓝光)



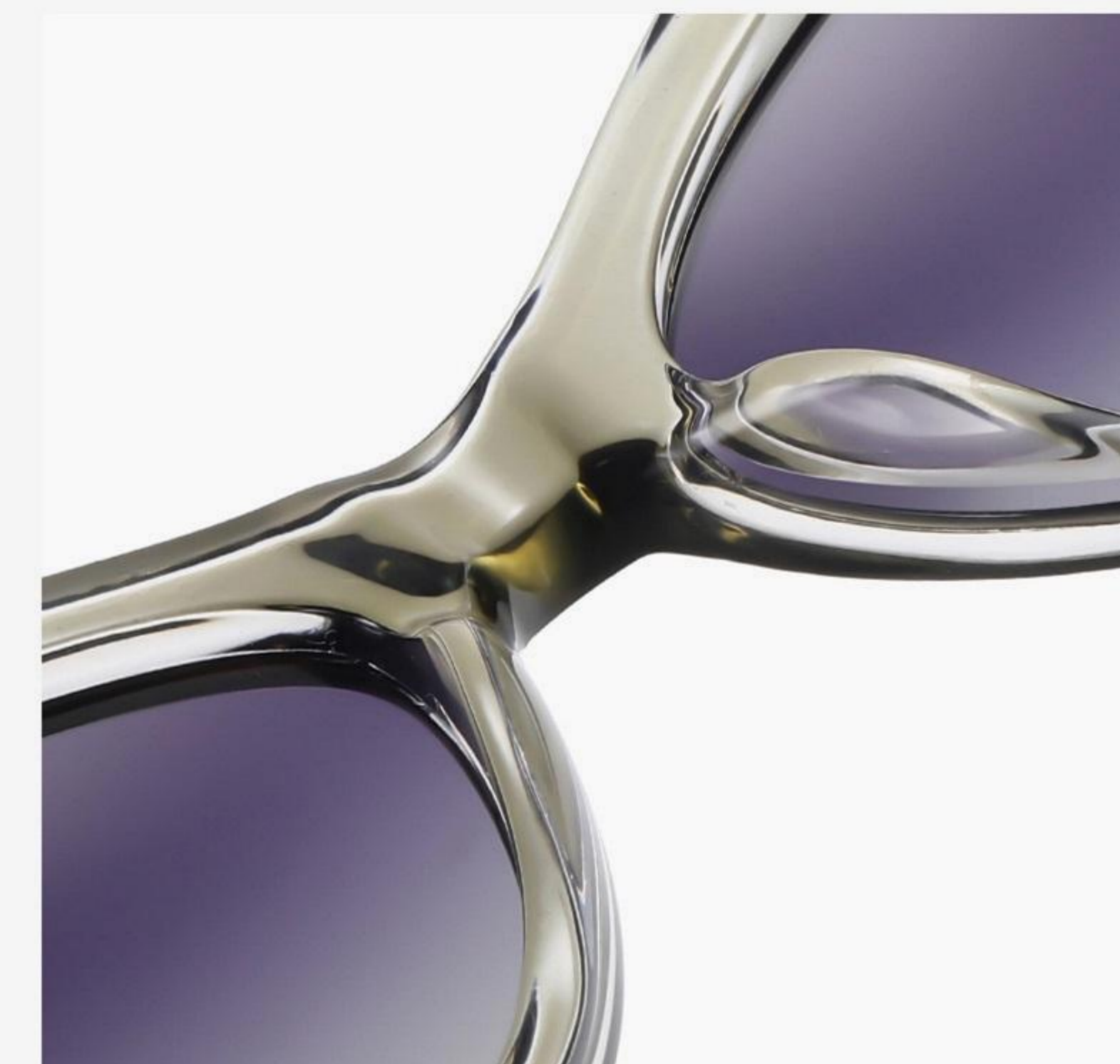
N0.10 上亮实深灰蓝下红玳瑁桩头灰蓝C5-1 (防蓝光)

TR+ACETATE



▲ S26113 Size : 49-18-145

Anti Blue Lens



COLOR.9 C4-1



N0.10 亮透蓝C5-1 (防蓝光)