



Model : 2140

Material : PC

Lens : TAC polarized lens

Size : 52-19-147



N0.1 黑框灰片



N0.2 黑框深蓝片



N0.3 黑框金片



N0.4 黑框橙红片



N0.5 黑框冰蓝片



N0.6 黑框蓝绿片



N0.7 黑框白水银



Model : 2140

Material : PC

Lens : TAC polarized lens

Size : 52-19-147



N0.8 亮黑灰



N0.9 砂黑灰



N0.10 玳瑁框茶片



N0.11 果蓝面托黑冰蓝



N0.12 果绿色托面黑绿



N0.13 红色面托黑红



N0.14 砂实白冰蓝



N0.15 砂实白粉



Model : ST2012

Material : PC

Lens : 1.1mm polarized lens

Size : 62-22-126



N0.1 亮黑灰片



N0.2 外黑内红灰片



N0.3 外黑内紫灰片



N0.4 酒红框灰片



N0.5 米白框灰片



N0.6 豆花框茶片



Model : 0717

Material : PC

Lens : TAC polarized lens

Size : 54-18-139



N0.1 黑框灰片



N0.2 渐变黑框绿水银



N0.3 渐变黑框红水银



N0.4 砂黑框墨绿片



N0.5 豆花框茶片



N0.6 渐变黑框黄水银



N0.7 渐变黑框冰蓝片



N0.8 渐变黑框水银片



Model : 0733 Material : PC+Aluminum magnesium Lens : TAC polarized lens Size : 54-18-139



N0.1 黑框黑腿灰片



N0.2 黑框枪腿灰片



N0.3 黑框银腿灰片



N0.4 黑框枪腿G15



N0.5 豆花框双茶片



N0.6 黑框枪腿冰蓝



N0.7 黑框樱花粉片



N0.8 透灰框白水银



Model : P0864

Material : Metal

Lens : TAC polarized lens

Size : 64-10-138



N0.1 黑框/灰片



N0.2 银烤黑/灰片



N0.3 银烤黑/白水银



N0.4 金烤黑/G15



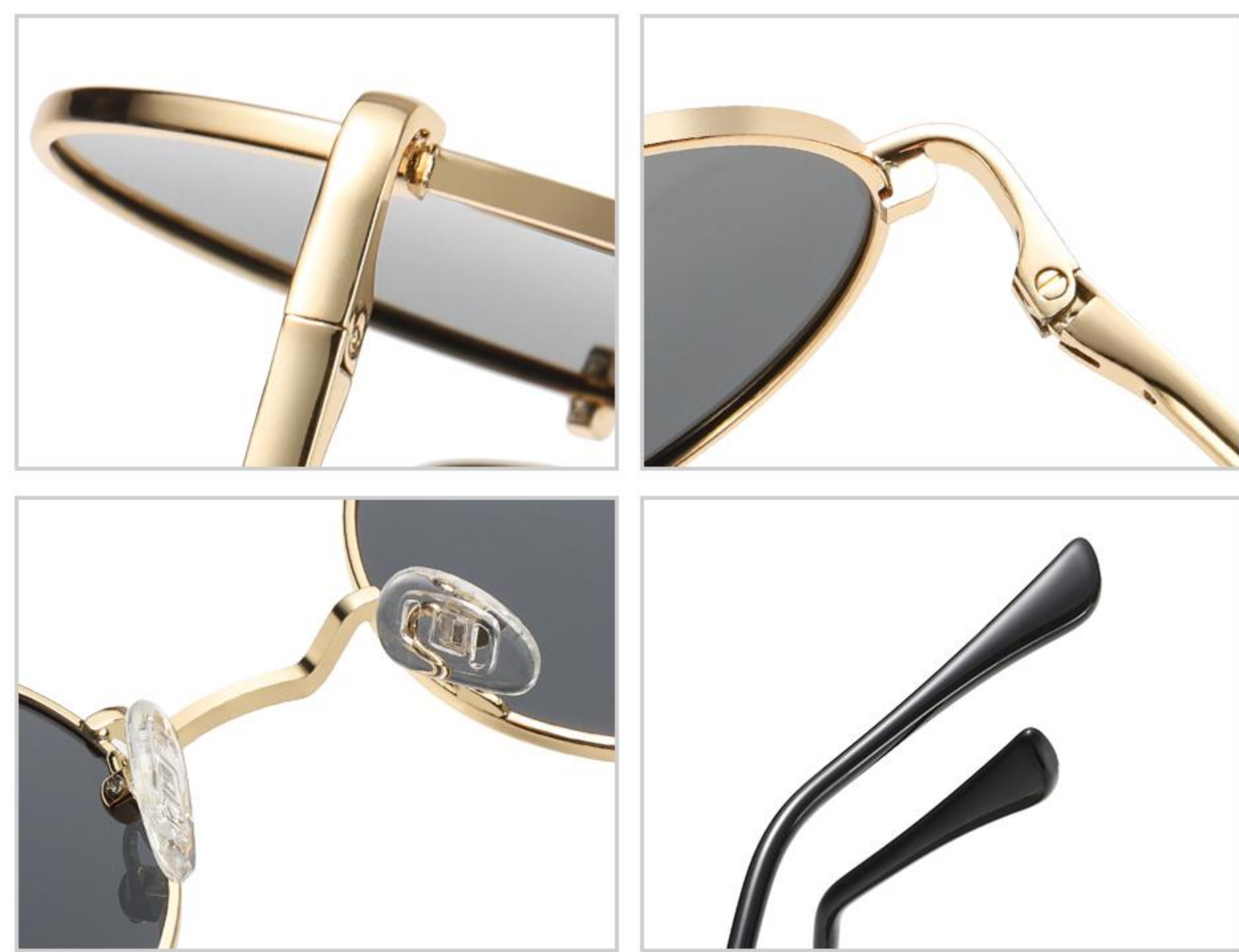
N0.5 银烤黑/冰蓝



N0.6 金烤黑/灰片



N0.7 黑框/夜视片



Model : 801

Material : Metal

Lens : TAC polarized lens

Size : 50-25-130



N0.1 砂黑框灰片



N0.2 亮枪框灰片



N0.3 亮金框灰片



N0.4 亮银框灰片



N0.5 亮银框冰蓝



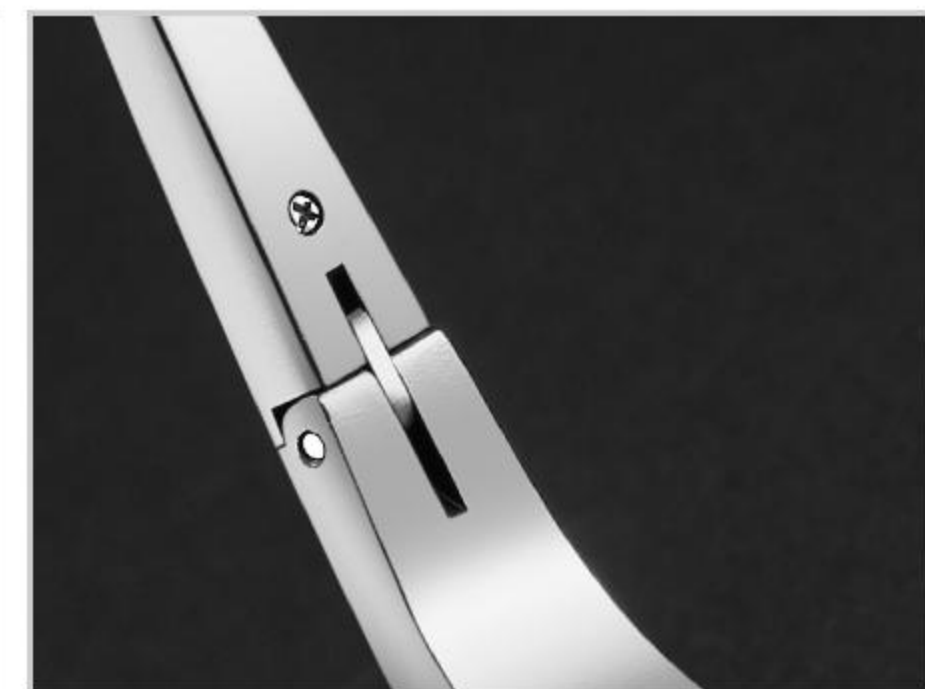
N0.6 亮银框绿膜



N0.7 亮金框玫金膜



N0.8 亮金框海洋粉



Model : 8177    Material : Aluminum magnesium    Lens : TAC polarized lens    Size : 68-13-145



N0.1 黑色



N0.2 银白



N0.3 枪灰



N0.4 咖啡





Model : 0911

Material : TR+Metal

Lens : TAC polarized lens

Size : 52-20-144



N0.1 黑框全灰C1



N0.2 金框全灰C4



N0.3 枪框冰蓝片C2



N0.4 银框白水银C3



N0.5 枪框全灰C5



Model : 0914

Material : Metal

Lens : TAC polarized lens

Size : 48-20-145



N0.1 黑框黑灰片



N0.2 银框黑灰片



N0.3 金框黑灰片



N0.4 铜框茶片



N0.5 银框冰蓝片



N0.6 金框红水银



Model : 0914

Material : Metal

Lens : TAC polarized lens

Size : 48-20-145



N0.7 金框绿水银



N0.8 银框水银片



N0.9 玫瑰金框樱花粉



N0.10 银框透黄片



N0.11 金框透明片



N0.12 黑框橙红片



Model : 0925

Material : Metal

Lens : TAC polarized lens

Size : 56-15-135



N0.1 黑框/黑灰片



N0.2 枪框/黑灰片



N0.3 银框/黑灰片



N0.4 金框/墨绿片



N0.5 银框/冰蓝片



N0.6 黑框/夜视片



Model : 0960

Material : Metal

Lens : TAC polarized lens

Size : 61-16-132



N0.1 黑金框黑灰片



N0.2 黑银框黑灰片



N0.3 黑枪框黑灰片



N0.4 茶金框茶色片



N0.5 枪银框冰蓝片



Model : 0971

Material : Metal

Lens : TAC polarized lens

Size : 66-17-149



N0.1 黑框/黑灰片



N0.2 枪框/黑灰片



N0.3 银框/黑灰片



N0.4 金框/黑灰片



N0.5 金框/茶色片



N0.6 银框/水银片



N0.7 银框/冰蓝片



N0.8 枪框/冰蓝片



Model : 0971RY

Material : Metal

Lens : TAC polarized lens

Size : 59-21-127



N0.1 黑框/日夜片



N0.2 枪框/日夜片



N0.3 黑框/夜视片



N0.4 枪框/夜视片



Model : ST5925

Material : TR+Metal

Lens : TAC polarized lens

Size : 58-16-140



N0.1 哑深枪/灰片C22-P01-J33



N0.2 哑黑/G15 C04-P25-J33



N0.3 哑中枪/茶片C21-P02-C33



N0.4 哑深兰/海洋兰C20-P16-C33



N0.5 哑黑/灰片C04-P01-J33

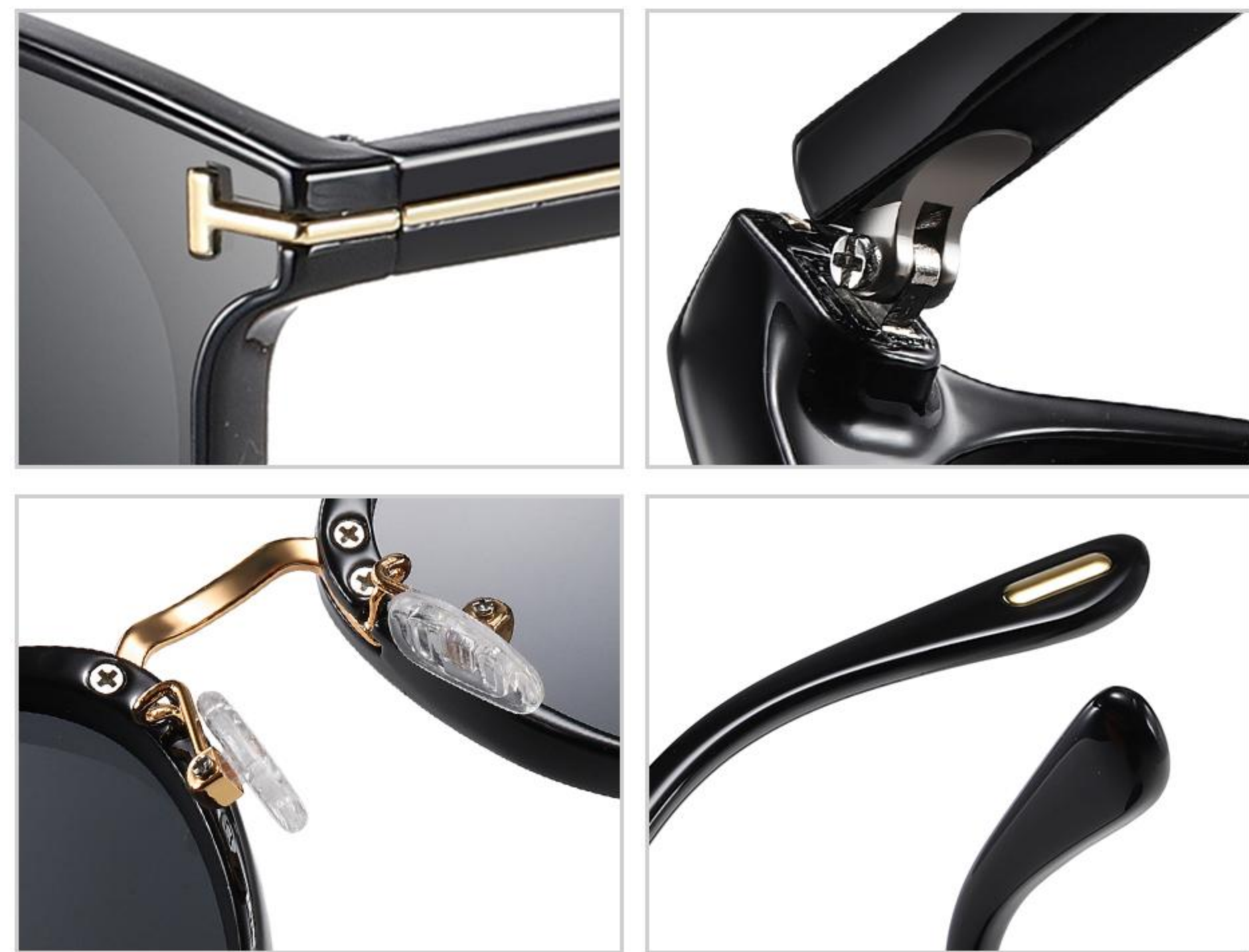


N0.6 哑黑/夜视C33-P18



N0.7 哑深/枪夜视C22-P18





Model : 2209

Material : PC+Metal

Lens : TAC polarized lens

Size : 60-17-143



N0.1 亮黑/灰片T1



N0.2 豆花/浅绿T22



N0.3 米白/灰蓝片T19



N0.4 米粉/上灰下红T23



N0.5 棕色/双茶T16



Model : 2233

Material : PC

Lens : TAC polarized lens

Size : 65-17-141



N0.1 亮黑/灰片T1



N0.2 透明茶/茶片T11



N0.3 透灰/灰片T27



N0.4 透明粉/粉T56



N0.5 米白/灰片T19



Model : 3306

Material : TR90

Lens : TAC polarized lens

Size : 55-17-145



N0.1 哑黑/G15 C04-P25



N0.2 哑黑/灰片C04-P01



N0.3 哑深红/茶片C175-P02



N0.4 浅灰/白水银C166-P08



N0.5 哑深蓝/海洋蓝C63-P16



Model : TR3308

Material : TR90

Lens : TAC polarized lens

Size : 57-19-140



N0.1 哑黑/灰片C04-P01



N0.2 哑茶豆花/茶片C177-P02



N0.3 哑黑/G15 C04-P25



N0.4 深酒红/酒红色C16-P39



N0.5 哑深蓝/海洋蓝C63-P16



Model : TR3320

Material : TR90

Lens : TAC polarized lens

Size : 56-17-140



N0.1 砂黑灰片C02-P20



N0.2 外黑内蓝绿片C142-P35



N0.3 外黑内红片C141-P60



N0.4 外深蓝内橙茶片C182-P75



N0.5 外黑内深蓝片C142-P10



Model : 3323

Material : PC

Lens : TAC polarized lens

Size : 53-29-140



N0.1 亮黑/灰片C01-P01



N0.2 豆花/G15 C70-P25



N0.3 弹性黑/红膜C73-P13



N0.4 豆花/茶片C70-P02



N0.5 弹性黑/冰蓝C73-P06



N0.6 弹性黑/灰片C73-P01



Model : TR3331

Material : TR90

Lens : TAC polarized lens

Size : 50-21-140



N0.1 亮黑C01-P01



N0.2 透明灰C25-P01



N0.3 透明粉C46-P15



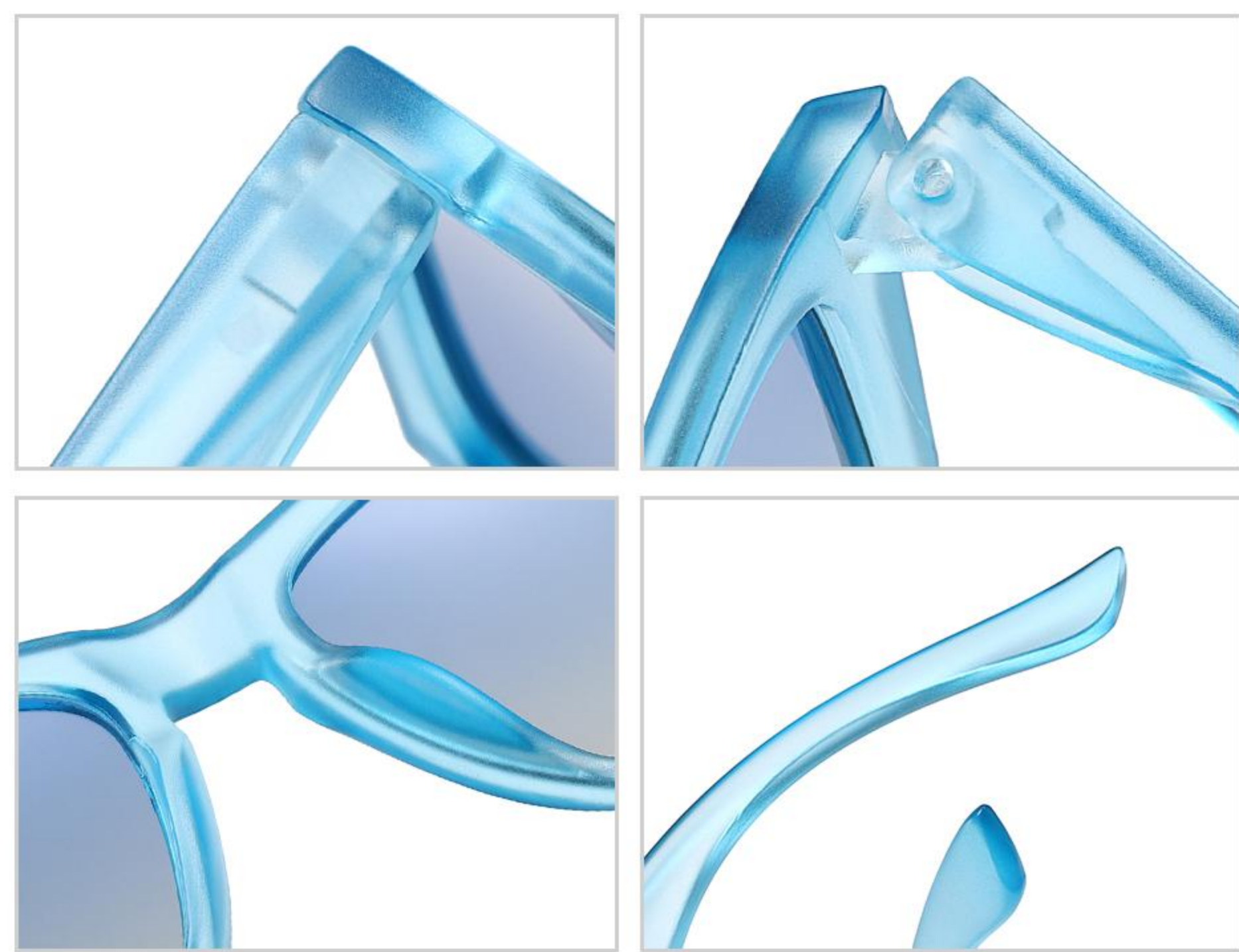
N0.4 白豆花C58-P01



N0.5 黄豆花C86-P01



N0.6 托面茶C39-P02



Model : 3332

Material : PC

Lens : TAC polarized lens

Size : 54-18-139



N0.1 果冻黄/蓝绿片C173-P35



N0.2 砂暗粉/渐进灰C74-P20



N0.3 透明灰/灰片C25-P15



N0.4 砂兰/渐进兰C95-P82



N0.5 上茶下透明/茶片C174-P20

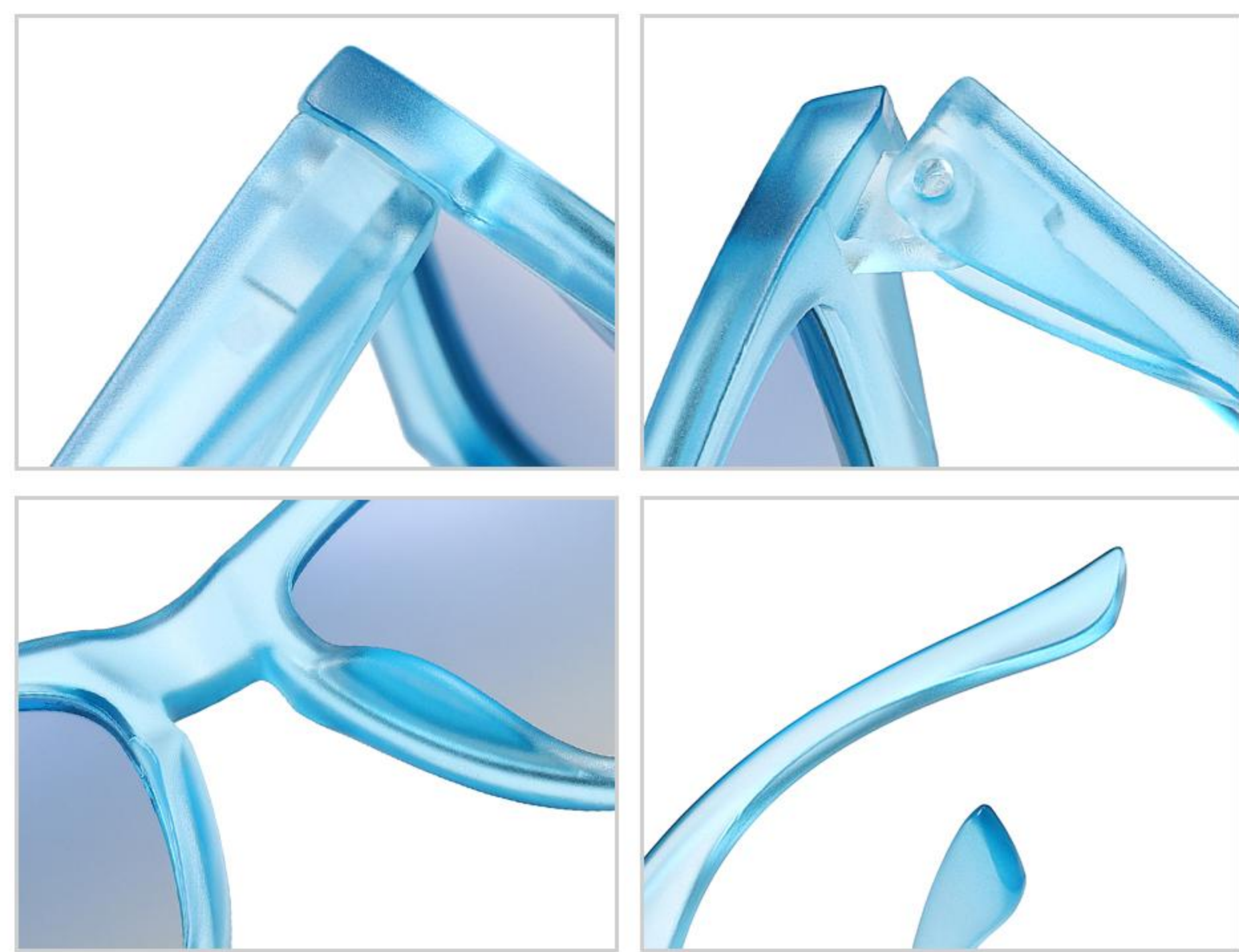


N0.6 砂粉/粉膜C74-P07



N0.7 透明色/紫片C26-P11





Model : 3332

Material : PC

Lens : TAC polarized lens

Size : 54-18-139



N0.8 透明色/玫瑰金C26-P05



N0.9 茶豆花/茶片C41-P02



N0.10 透明红/G15 C42-P25



N0.11 砂茶/茶片C32-P02



N0.12 米白/海洋兰C128-P16



N0.13 米白/灰片C128-P01



N0.14 砂实兰/渐进兰C246-P82



Model : TR3333    Material : TR+Aluminum    Lens : TAC polarized lens    Size : 57-17-140



N0.1 亮黑红膜C01-P13



N0.2 亮黑灰片C01-P01



N0.3 哑实灰灰片C169-P01



N0.4 砂黑渐进灰C33-P41



N0.5 砂黑冰兰C33-P06



Model : TR3341    Material : TR+Aluminum    Lens : TAC polarized lens    Size : 56-17-140



N0.1 亮黑/灰片C01-P01



N0.2 砂黑/白水银C33-P08



N0.3 哑兰/深蓝C95-P10



N0.4 砂黑/冰蓝C33-P06



N0.5 哑实灰/灰片C169-P01



Model : TR3349

Material : TR90

Lens : TAC polarized lens

Size : 56-17-140



N0.1 哑黑/海洋深蓝C04-P86



N0.2 米黄色C185-P01



N0.3 哑菜豆花C195-P75



N0.4 哑深灰C134-P01



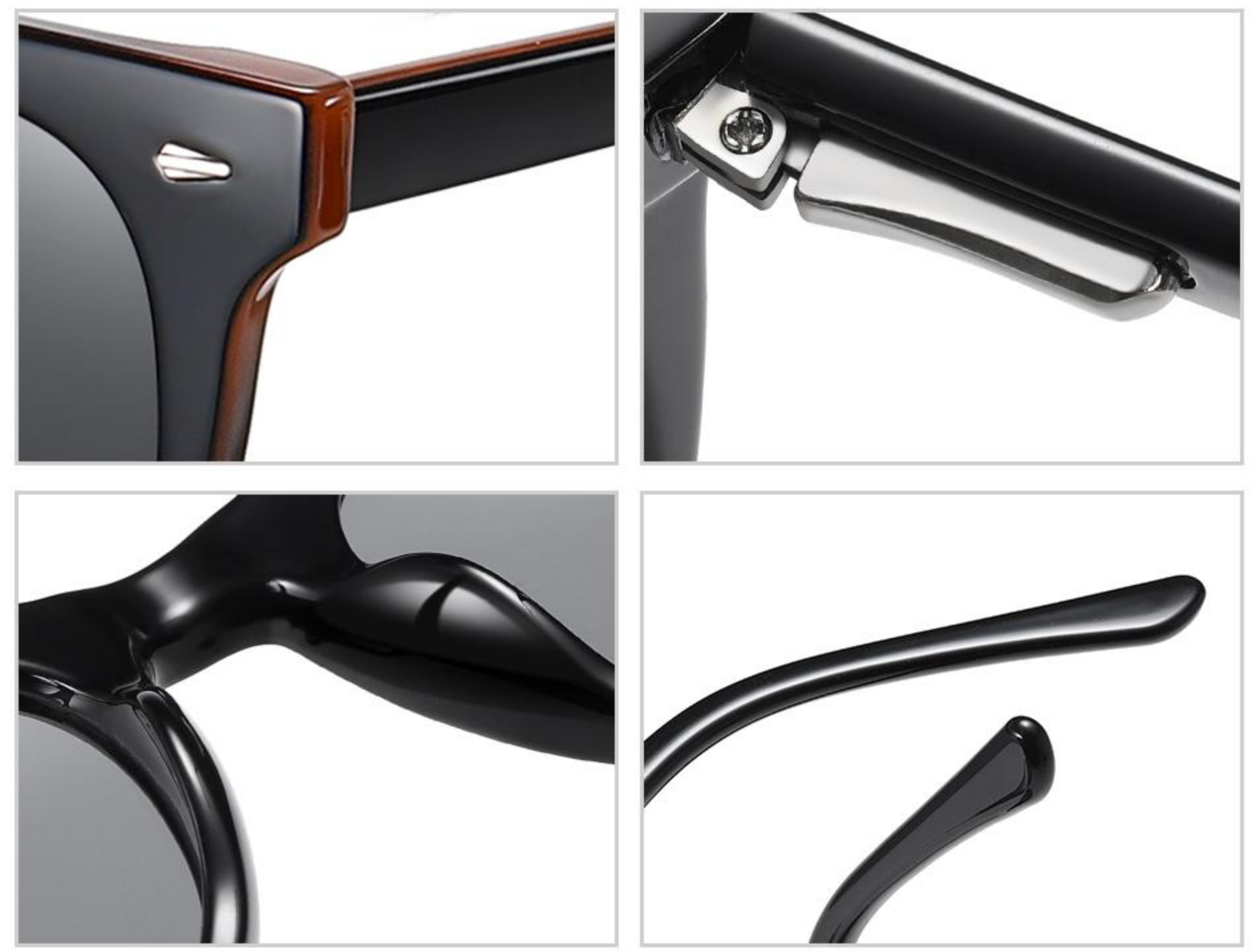
N0.5 哑透明灰C157-P20



N0.6 哑黑/灰C04-P20



N0.7 哑黑/红C04-P20-1



Model : TR3361

Material : TR90

Lens : TAC polarized lens

Size : 50-20-138



N0.1 亮黑/灰片C01-P20



N0.2 茶豆花/茶片C94-P75



N0.3 透明茶/上兰下粉C92-P85



N0.4 外兰内粥水豆花/海洋蓝C194-P86



N0.5 外黑内粥水豆花/灰片C193-P20



N0.6 透明灰/浅灰C25-P84



Model : TR3366

Material : TR+Metal

Lens : TAC polarized lens

Size : 57-18-140



N0.1 亮黑枪/渐进灰C01-P41



N0.2 亮黑银/渐进紫C01-P73



N0.3 亮黑黑/渐进红C01-P79



N0.4 深蓝枪/海洋深兰C121-P86



N0.5 豆花银/茶片C40-P92



Model : 3375

Material : Metal

Lens : TAC polarized lens

Size : 60-13-140



N0.1 哑黑/渐进灰C04-P41



N0.2 哑浅日本金/茶片C90-P90



N0.3 哑银/渐近深蓝C10-P95



N0.4 哑中枪/墨绿片C21-P96



N0.5 哑中枪/海洋深红C21-P60



Model : TR3381

Material : TR90

Lens : TAC polarized lens

Size : 55-15-135



N0.1 砂黑/灰片C33-P01



N0.2 砂黑/夜视C33-P18



N0.3 砂黑/海洋深红C33-P60



N0.4 砂黑/海洋深蓝C33-P86



N0.5 砂黑/蓝绿片C33-P91





Model : 3501

Material : TR90

Lens : TAC polarized lens

Size : 54-16-143



N0.1 砂黑/灰片



N0.2 砂黑/夜视



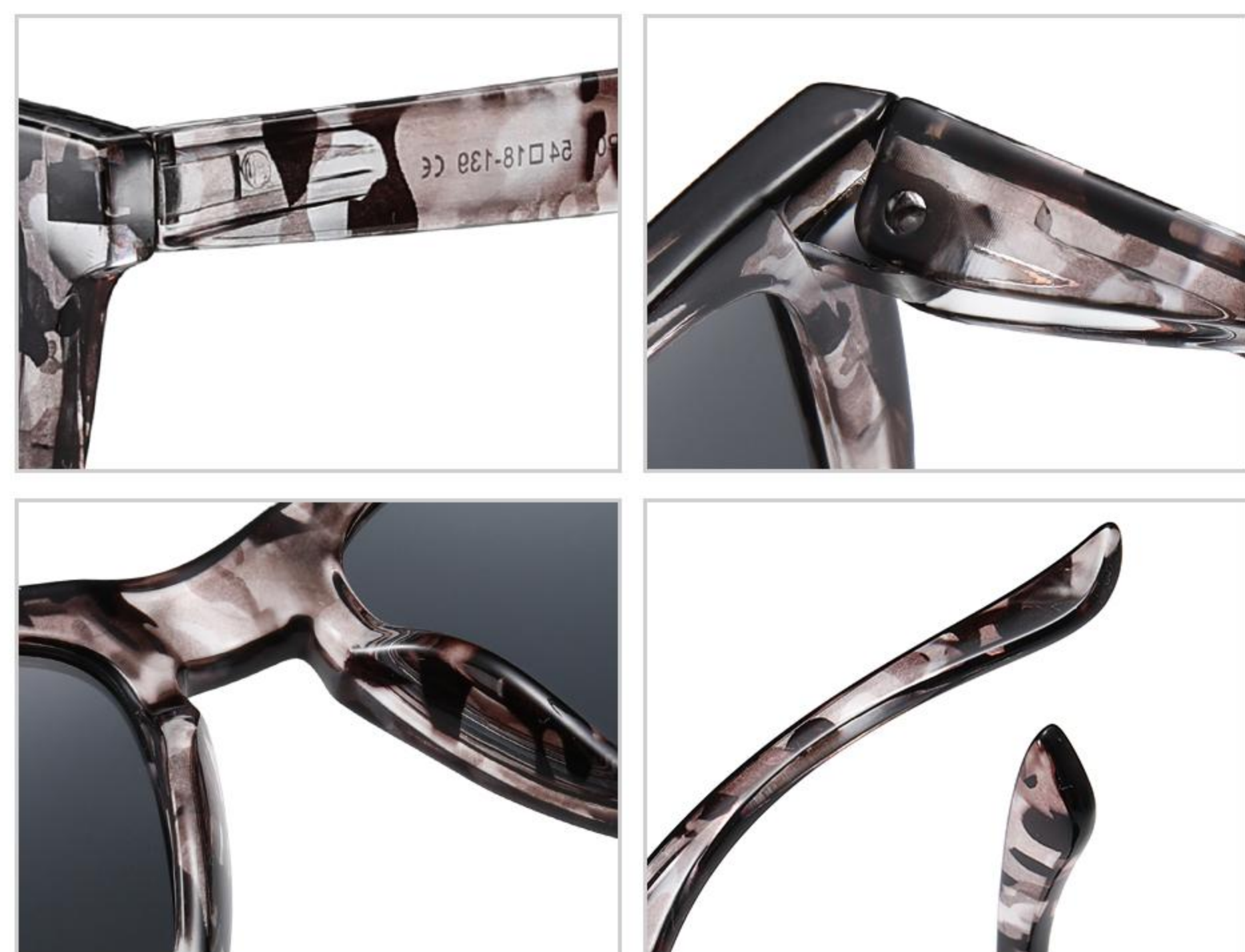
N0.3 砂黑/深蓝



N0.4 砂茶/茶片



N0.5 蓝框/冰蓝



Model : 3382

Material : PC

Lens : TAC polarized lens

Size : 54-18-139



N0.1 黑灰迷彩灰片C227-P01



N0.2 黄玳瑁茶片C228-P92



N0.3 茶木纹茶片C178-P75



N0.4 茶条纹渐进深茶C245-P94



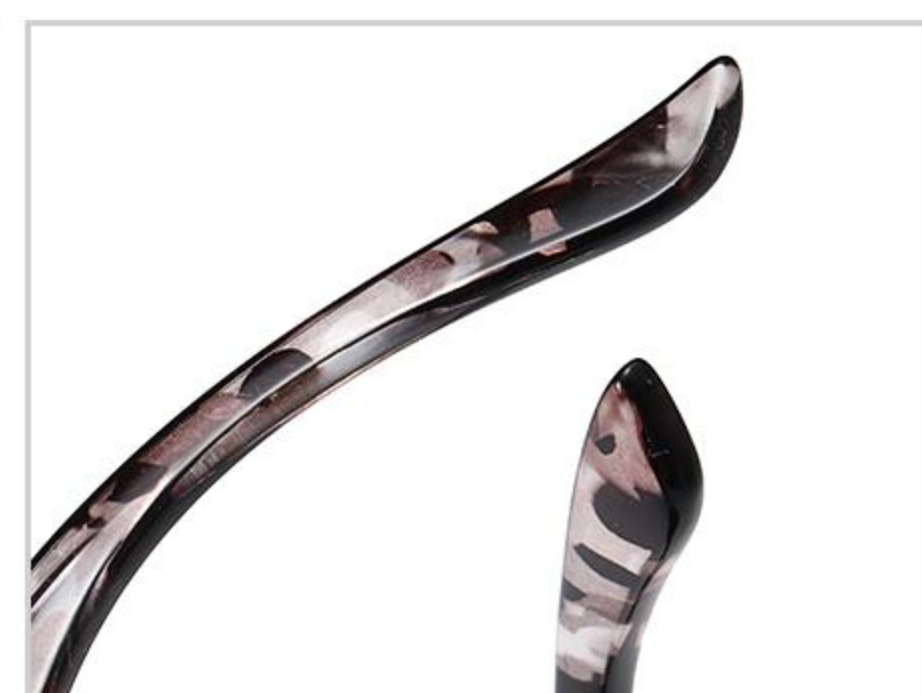
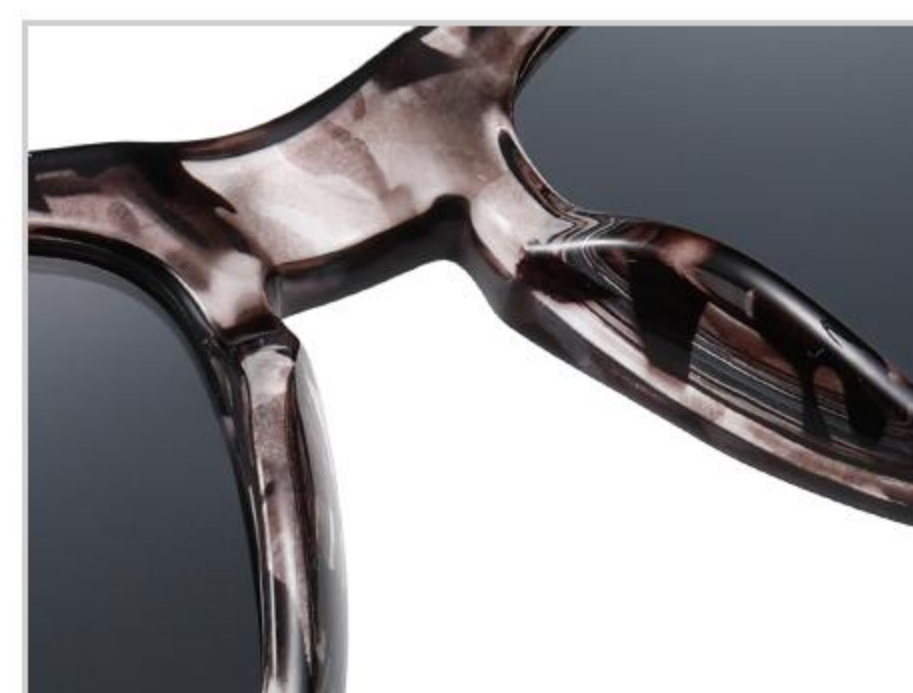
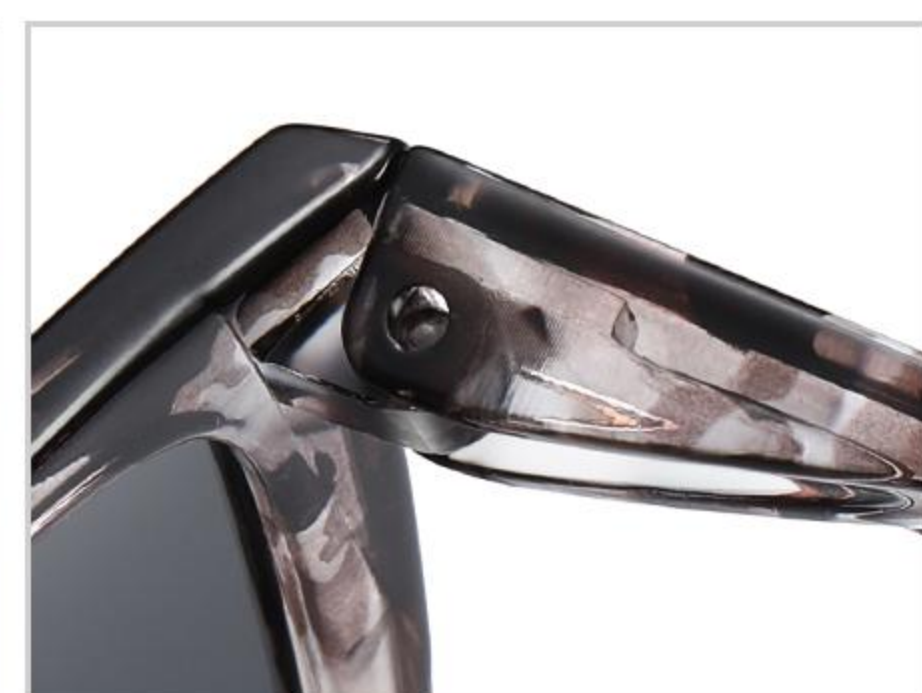
N0.5 紫玳瑁紫膜C229-P59



N0.6 点点猫真粉膜C230-P68



N0.7 黄间红花海洋粉C231-P15



Model : 3382

Material : PC

Lens : TAC polarized lens

Size : 54-18-139



N0.8 黑条格白水银C232-P08



N0.9 茶云团渐进茶C233-P44



N0.10 蓝玳瑁海洋深蓝C49-P86



N0.11 蓝回纹海洋蓝C234-P16



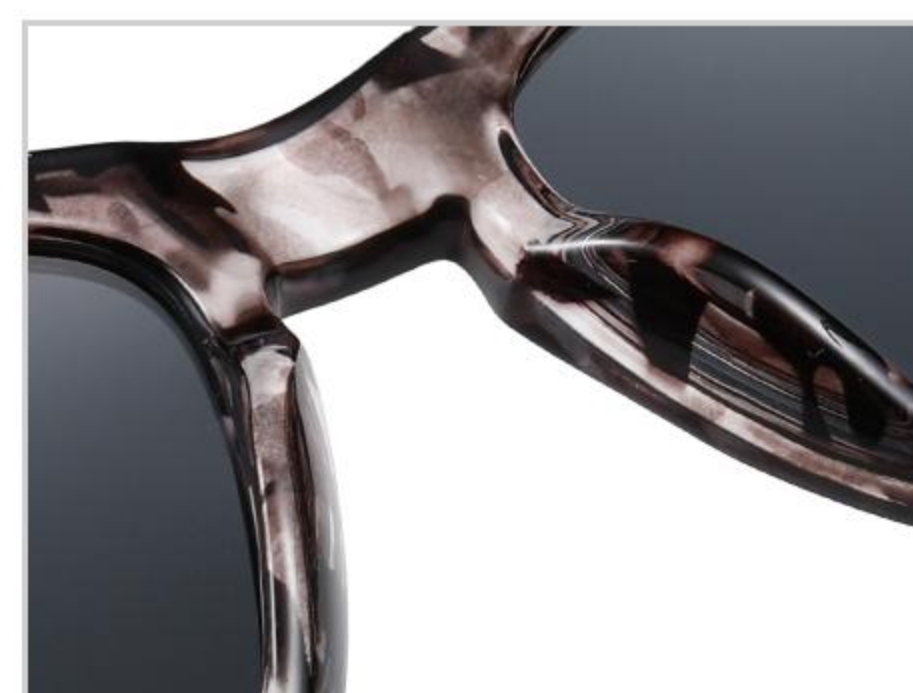
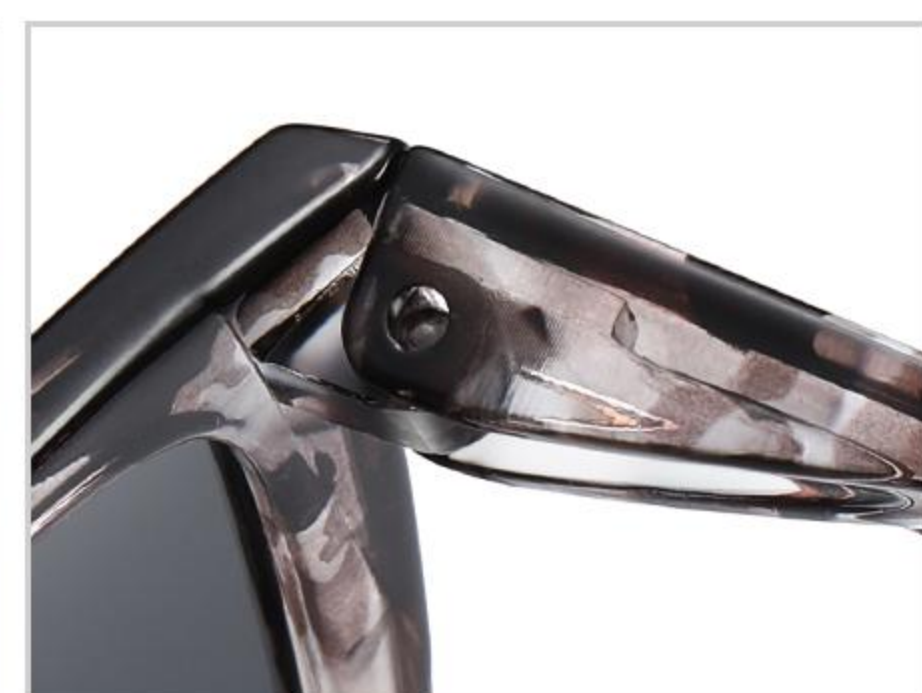
N0.12 流星茶白水银C235-P08



N0.13 绿玳瑁绿片C236-P96



N0.14 五彩环海洋深红C237-P60



Model : 3382

Material : PC

Lens : TAC polarized lens

Size : 54-18-139



N0.15 五彩间格海洋蓝C238-P16



N0.16 星云红渐进红C239-P79



N0.17 骷髅头绿膜C240-P14



N0.18 线茶茶片C241-P102



N0.19 五彩花上蓝下粉C242-P85



N0.20 透明茶花冰兰C243-P06



N0.21水墨细格灰片C244-P01



Model : TR3386

Material : TR90

Lens : TAC polarized lens

Size : 61-09-145



N0.1 哑黑C04-P101



N0.2 哑深灰G15片 C169-P25



N0.3 哑深茶花C177-P101



N0.4 哑深灰浅红C169-P57



N0.5 哑深蓝海洋蓝C247-P16



Model : TR3387

Material : TR90

Lens : TAC polarized lens

Size : 55-16-145



N0.1 哑黑灰片C04-P101



N0.2 哑深蓝海洋蓝C247-P16



N0.3 哑黑海洋粉C04-P15



N0.4 哑深茶花茶片C177-P92



N0.5 哑深茶花G15片C177-P25



Model : 3391    Material : Aluminum magnesium    Lens : TAC polarized lens    Size : 61-14-130



N0.1 黑灰C04-P97



N0.2 哑深枪灰C22-P101



N0.3 哑深枪茶C22-P90



N0.4 哑银海洋深蓝C10-P71



N0.5 哑黑酒红C04-P39



Model : TR3398

Material : TR90

Lens : TAC polarized lens

Size : 54-16-140



N0.1 亮黑灰片C01-P109



N0.2 哑黑灰片C04-P109



N0.3 上蓝下浅蓝渐近蓝C270-P114



N0.4 上亮黑下透明渐近灰C68-P115



N0.5 上豆花下灰渐近茶C271-P116



N0.6 上深灰下浅棕茶片C272-P117





Model : TR3399

Material : TR90

Lens : TAC polarized lens

Size : 53-18-140



N0.1 亮黑灰片C01-P109



N0.2 哑黑灰片C04-P109



N0.3 亮透明绿片C26-P96



N0.4 亮豆花茶片C274-P112



N0.5 哑实深蓝海洋蓝C275-P37



N0.6 亮透明浅茶茶片C280-P111