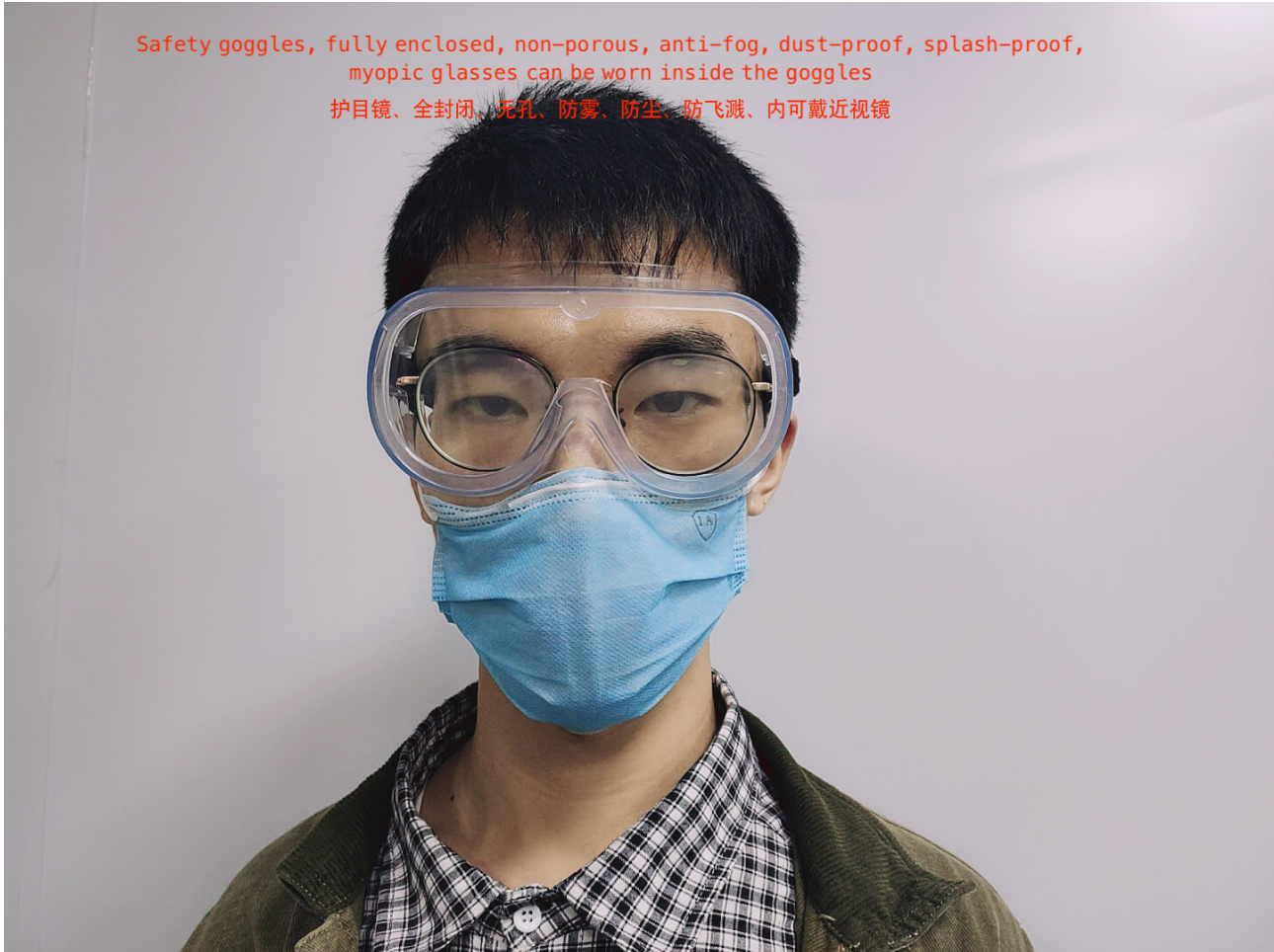


Specification of Safety Goggles



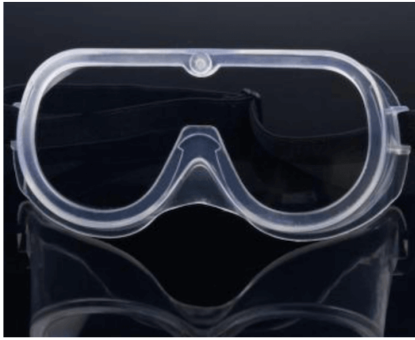
Description:

Safety goggles also called safety glasses, fully enclosed, non-porous, anti-fog, dust-proof, splash-proof, myopic glasses can be worn inside the goggles.

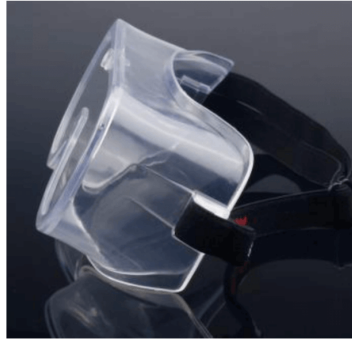
Application:

People in airports, high-speed rail stations, subway stations, railway stations, checkpoints and other places have a huge demand for safety goggles.

Specification of Safety Goggles



Front View



Side View



Rear View

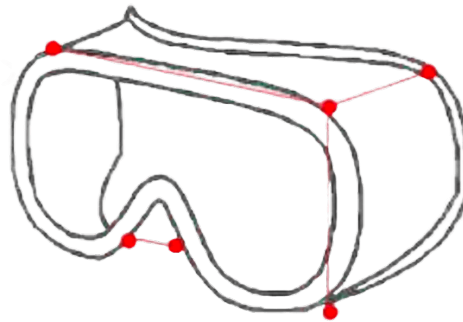
Features:

- Eco-friendly PVC frame
- Injection molding PC lens
- Anti-fog lenses ensure your vision always clear
- Excellent transmittance, eyeglass lenses are transparent
- Elastic headband, comfortable to wear
- Suitable for occasions with chemical spatter, particle impact and dust



Specification:

- Name: Safety Goggles / Safety Glasses
- Frame Material: PVC
- Lens Material: Anti-fog PC Lenses
- Net Weight: 74g
- Frame width: 150mm
- Frame height: 73mm
- Frame thickness: 64mm
- Nose distance: 25mm



Packaging:

- Packing Method: Paper Carton
- Q'ty: 180 pairs/carton
- Net Weight: 12.9 KG/carton
- Gross Weight: 16.7 KG/carton
- Carton Size: 57cm*38.5cm*56cm
- Volume: 0.1229 M3/carton
- Packing Q'ty: 10 pairs/inner box, 180 pairs/carton

Specification of Safety Goggles

Certificates:

Our safety goggles are CE approved can be exported to European countries, and FDA approved can be exported to the U.S.A. and other America countries.

Production Capability:

10,000 pairs of safety glasses can be produced per day.

Lead Time:

3 days for 10,000 pairs of safety glasses after full payment.

Small order less than 5,000 pairs have stock every day, small order support too.